

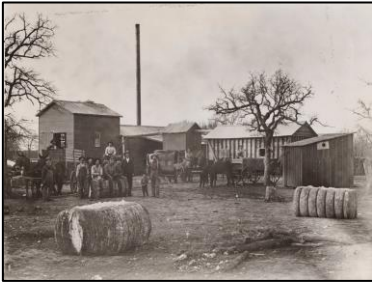
FY 2022 Certified Local Government Survey Grants



City of Fort Worth Historic Resource Survey Update Phases V-VI (Terrell Heights Survey, GIS application)

CLG: Fort Worth
CLG Grant Award: \$47,500
Consultant: HHM & Associates, Inc. Total Project Cost: \$95,000

The City of Fort Worth commissioned HHM & Associates to complete Phases V-b and VI of a multi-year, multi-phase historic preservation planning and cultural resource management project. Phase V-b entailed integration of prior survey data into a GIS-compatible database template. Phase VI was a reconnaissance-level survey of the Terrell Heights local historic district and the overlapping Southeast National Register Historic district.

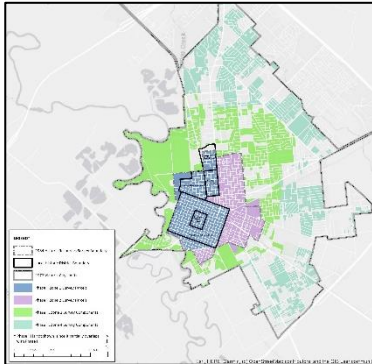


Historic Resources Survey Phase I & II for Tarrant County

CLG: Tarrant County
CLG Grant Award: \$39,500
Consultant: HHM & Associates, Inc. Total Project Cost: \$79,000

Implementing recommendations made in the 2021 Tarrant County Preservation Plan, this project developed thematic historic context statements for Tarrant County with the exclusion of Fort Worth. Contexts explore and document historical events and trends important to the physical development of a place and set forth the required background information needed to assess the historical significance of properties.

FY 2021 Certified Local Government Survey Grants



Historic Resources Survey Plan for Victoria

CLG: Victoria County
CLG Grant Award: \$12,500
Consultant: HHM & Associates, Inc. Total Project Cost: \$25,000

The survey plan provides recommendations for updating the survey to incorporate data about buildings constructed through 1976, as well as consider more modest resources associated with Victoria's diverse ethnic heritage and cultural history. The plan presents recommendations for future research and historic context development, as well as a prioritized list of recommendations for future survey work that can be phased over multiple years.



Pine Bluff-Fitzhugh Neighborhood Survey Update

CLG: Paris
CLG Grant Award: \$5,000
Consultant: McDoux Preservation LLC Total Project Cost: \$10,000

The City of Paris hired McDoux Preservation to re-survey its National Register-listed Pine Bluff-Fitzhugh Historic District survey, so that it could evaluate whether the district would qualify as a local historic district.

FY 2020 Certified Local Government Survey Grants



Historic Resources Survey Update, Phases 3B/C and 4B

CLG: Fort Worth
CLG Grant Award: \$48,875
Consultant: HHM & Associates, Inc.

Total Project Cost: \$85,000

The City of Fort Worth continued a multi-year process to update and expand its previously completed surveys. A city-wide survey plan was created, and historic context statements were developed for the periods 1849–1899 and 1946–1970.



Historic Resources Survey of Downtown San Angelo

CLG: San Angelo
CLG Grant Award: \$20,125
Consultant: HHM & Associates, Inc.

Total Project Cost: \$35,000

The City of San Angelo completed a comprehensive historic resources survey of downtown. 390 resources were assessed and HHM recommended a downtown district eligible for local designation and listing in the National Register.



Tobin Hill Neighborhood Historic Resources Survey

CLG: San Antonio
CLG Grant Award: \$11,500
Consultant: Post Oak Preservation Solutions and City of San Antonio

Total Project Cost: \$21,700

The survey project included creating an inventory of 1,863 parcels (1,177 historic age) in a neighborhood in northwest San Antonio experiencing increased developmental pressure. The survey area encompassed two local historic districts.

FY 2019 Certified Local Government Survey Grants

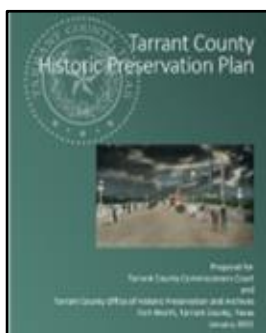


Historic Resource Survey of the Old Austin Neighborhood

CLG: Austin
CLG Grant Award: \$12,000
Consultant: HHM & Associates, Inc.

Total Project Cost: \$24,000

The City of Austin conducted a historic resources survey of the Old Austin Neighborhood district which included multiple residential, commercial, and federal buildings and transportation resources.



Tarrant County Historical Preservation Plan

CLG: Tarrant County
CLG Grant Award: \$39,500
Consultant: HHM & Associates, Inc.

Total Project Cost: \$79,000

Tarrant County and the Tarrant County Historical Commission partnered with HHM & Associates, Inc. to complete a county Preservation Plan, which involved significant community outreach.

FY 2018 Certified Local Government Survey Grants



Waxahachie Historic Resources Survey, Zone 1

CLG: Waxahachie
CLG Grant Award: \$20,000
Consultant: HHM & Associates, Inc.

Total Project Cost: \$40,000

The City of Waxahachie worked on a historic resources survey for Zone 1 of the City which included all properties on the north and south sides of Marvin Street and south of Marvin Street, extending to the 1973 ETJ boundary of Waxahachie.



City of San Marcos Historic Resources Survey

CLG: San Marcos
CLG Grant Award: \$39,290.85
Consultant: Hicks & Company

Total Project Cost: \$78,581.70

The City of San Marcos conducted a historic resources survey to identify, document, and prioritize previously unsurveyed resources, allowing to the City to locally designate and protect more historic properties.

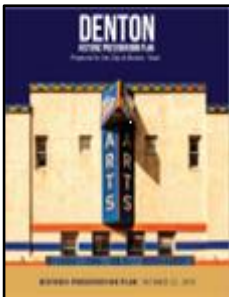


Survey of Historic Downtown Seguin and the Historic Railroad District

CLG: Seguin
CLG Grant Award: \$10,000.00
Consultant: Cox McLain Environmental Consulting

Total Project Cost: \$20,288.62

The City of Seguin updated its 1977-81 historic resources survey of the downtown district and gateway entrance, comprised of 179 total resources including Victorian homes, commercial buildings, and warehouses.



Historic Preservation Plan

CLG: Denton
CLG Grant Award: \$20,000
Consultant: Lakota Group

Total Project Cost: \$40,000

The City of Denton preservation plan from 1986 was updated to accommodate changes the City had implemented since its original adoption.

FY 2017 Certified Local Government Survey Grants



City of Brownsville Historic Resources Survey

CLG: Brownsville
CLG Grant Award: \$23,750
Consultant: Hardy Heck Moore, Inc.

Total Project Cost: \$80,000

City staff worked with the consultant to update the historic resources surveys of five neighborhoods, including downtown (861 resources). The cost reflects survey work and a National Register nomination for the Central Historic District.



Historic Resources Survey Update for Downtown Beaumont

CLG: Beaumont
CLG Grant Award: \$4,000.00
Project Manager: Richard Gachot, Lamar University

Third Party: Beaumont Heritage Society
Total Project Cost: \$7,418.81

A professor at Lamar University led a historic resources survey update powered by students and volunteers. The survey identified several properties individually eligible for the National Register.

FY 2016 Certified Local Government Survey Grants



Historic Resources Survey of Corpus Christi Downtown Management District and a Portion of Uptown

CLG: Corpus Christi
CLG Grant Award: \$12,000
Consultant: Hardy-Heck-Moore, Inc.

Total Project Cost: \$24,467

The historic resources survey supplemented the 1991 survey covering the downtown area of approximately 426 acres as this area has undergone notable changes in the interim. Historic resources of Corpus Christi are links to its rich past and form a vital part of a revitalized downtown.



Northwest Travis County Historic Resources Survey

CLG Grant Award: \$25,000
Consultant: Hicks & Company

Total Cost of Project: \$50,000

This historic resources survey wrapped up a multi-phased multi-year project of surveying the entire Travis County, outside of Austin. It was a mixture of more modern residential suburbs and planned neighborhoods juxtaposed with older farmsteads, ranches, and small communities, allowing for a combination of windshield and reconnaissance survey efforts.



Historic Resources Survey of Rockwall

CLG Grant Award: \$5,000
Consultant: Hardy-Heck-Moore, Inc.

Total Cost of Project: \$10,000

This project surveyed the downtown area and one residential historic district to heighten awareness of Rockwall's historic resources, support implementation of the city's historic preservation ordinance, and guide planning for future development. The survey data will update existing data, so the city may make informed decisions about local historic zoning overlays, and guide decisions on new development.

FY 2019 Certified Local Government Survey Grants



Pollard Farm Neighborhood Historic Resources Survey, City of Tyler

CLG Grant Award: \$11,248

Total Project Cost:

\$22,496

Consultant: Diane E. Williams

The historic resources survey updated the 1995 survey that only partially surveyed the area in question. The updated survey resulted in an expanded inventory of historic resources, allowing for an increased sense of place and protection of Tyler's historic resources. Potential historical properties in this neighborhood can be incorporated into additional Local Historic District Overlays, allowing for educational opportunities for other potential overlays.



Southwest-west Travis County Survey

CLG Grant Award: \$7,500

Total Project Cost:

\$15,000

Consultant: Hicks & Company

The historic resources survey is part of a multiple-phase survey project. The southwest-west quadrant of Travis County needed to be inventoried due to the continued development of US 290 corridor. The relatively unoccupied rural lands are prime expansion locations as the county population grows. The project is intended to provide expanded information about the resources to local residents and to the greater Travis County population, and to identify the role of this area in the history of the county.



City of Longview Historic Resources Update and Survey Plan

CLG Grant Award: \$20,000

Total Project Cost:

\$40,000

Consultant: Preservation Central, Inc.

The survey grant developed a survey plan with recommendations for completing a multi-phase city-wide historic resources survey and completed a historic resources survey of the downtown area. This survey provides an update to the previous 1986 survey report.



African-American and Mexican-American Settlement Survey in Travis County

CLG Grant Award: \$7,500

Total Project Cost: \$15,000

Consultant: Hicks & Company

This grant project is to provide funding for research early African-American and Mexican-American communities that developed in Travis County. Some of these communities were African-American "Freedmen's Colonies" following the Civil War while others were settlements of Mexican-American families that moved to rural areas to provide labor and to escape the turmoil of the Mexican Revolution. The study will shed valuable light on a segment of Travis County's history that has been long overlooked.

FY 2014 Certified Local Government Survey Grants



City of Austin's Mount Bonnell Cultural Landscape Inventory & Monument Restoration

CLG Grant Award: \$25,000
Consultant: City of Austin Staff

Total Project Cost: \$53,500

Counted as one of Austin's most significant sites, Mount Bonnell had no comprehensive survey of the site. In addition, existing historic features were in disrepair and in need of conditions assessment to determine treatment options and to prioritize future work. The historic limestone monument on site that commemorates the 1938 donation of the land by the Covert family was restored in keeping with the Secretary of the Interior's Standards and the Guidelines for Cultural Landscapes.



City of Denton Historic Resources Survey Update: Phase 2 Glenwood Neighborhood

CLG Grant Award: \$37,755
Consultant: CRS Group

Total Project Cost: \$86,096

The historic resources survey updated the 1996 survey for the Glenwood Neighborhood in order to develop and maintain a comprehensive inventory of the city's historic resources, which was identified as the primary goal of the Denton Historic Landmark Commission.

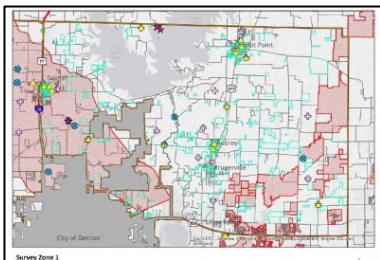


City of Galveston Local Historic District Survey Update: East End, Silk Stocking, Lost Bayou

CLG Grant Award: \$10,000
Consultant: Hardy-Heck-Moore, Inc.

Total Project Cost: \$20,000

The local historic district survey update included the East End District, Silk Stocking District, and Lost Bayou District as they were last done at least 20 years ago. This updated information addresses a deficiency in the City of Galveston's historic preservation program by updating a valuable resource that is used by city staff and landmark commission. The survey data will be used to develop historic contexts and is available for public use



Denton County Historic Resources Survey Plan, Phase 1

CLG Grant Award: \$30,000
Consultant: Hardy-Heck-Moore, Inc.

Total Project Cost: \$60,019

Denton County identified the need to document its communities and rural areas that are under threat due to increased development. After conducting research and map analysis, the consultant presented recommendations for a multi-phase county-wide survey of historic resources in Denton County, not including the City of Denton.



Southwest Travis County Historical Survey

CLG Grant Award: \$8,500
Consultant: Preservation Central, Inc.

Total Project Cost: \$17,000

The historic resources survey was a continuation of the multiple-phase survey project; this phase included the southwest quadrant of Travis County, which was in dire need of being inventoried due to the projected expansion of SH 45 through the area and continued expansion/development of Austin and Buda.

FY 2013 Certified Local Government Survey Grants



Comal County Historic Resources Survey, Phase 4

CLG Grant Award: \$13,250

Total Project Cost: \$26,500

Consultant: Hardy-Heck-Moore, Inc.

Phase 4 of the Comal County Historic Resources Survey included historic resources prior to 1945 in the Bulverde area of Comal County in order to complete the multi-phased survey project. Comal County has many historic resources that risk potential loss or alterations without historic designation. There is a real threat to the county's historic resources due to developmental pressures from San Antonio, New Braunfels, and the I-35 corridor.



Denison Downtown Historic Resources Survey

CLG Grant Award: \$3,500

Total Project Cost: \$7,000

Consultant: Community Revitalization Strategies

The City of Denison proposed an updated survey of its downtown district, including database development and GIS technology. Preserving the history of this town through the survey is vital to preserving its historic resources, which serve as the foundation of the neighborhood and downtown revitalization programs and as part of a comprehensive economic development strategy for the city.



Palestine Historic Resources Resurvey

CLG Grant Award: \$3,000

Total Project Cost: \$19,000

Consultant: City of Palestine

The City of Palestine conducted a reconnaissance-level resurvey of its locally designated Downtown Historic District to update its 1993 survey. As a commercial district, the Downtown District represents the primary exposure visitors receive to the historic city core. This translates into additional visitation as well as investment into this district as visitors become aware of the historic character of Palestine.

FY 2013 Certified Local Government Survey Grants



Southeast Travis County Historical Survey

CLG Grant Award: \$7,500

Total Project Cost: \$15,000

Consultant: Preservation Central, Inc.

Travis County continued its ongoing efforts to inventory its historic resources in the county and provide data on the entire eastern half of Travis County. This area needed to be inventoried due to the continued expansion of SH-130 and the construction of the Formula One Racetrack and its accompanying development.



Tyler Downtown Historic Resources Survey

CLG Grant Award: \$5,858

Total Project Cost: \$11,716

Consultant: Preservation Central, Inc.

The City of Tyler requested funds to do a resurvey of their existing Historic Resources Survey from 1995. The identification of significant historic resources aids in the protection of these resources and helps stimulate economic development in Tyler's downtown area and preserve its cultural history.



These grant projects were funded in part by a Certified Local Government (CLG) grant administered by the Texas Historical Commission (THC). For additional information on the Texas CLG Program, please visit our website at <http://www.thc.texas.gov>.

The CLG Program enables local governments - town, city, municipality, or county - to develop and sustain a strong preservation ethic that influences zoning and permit decisions critical to preserving local historic resources. In Texas, the CLG program is part of THC's Community Heritage Development Division. It helps to promote local preservation efforts through a partnership between the National Park Service, the THC, and local governments by providing technical and financial assistance.

P.O. BOX 12276
AUSTIN, TX 78711-2276
PHONE 512.463.6100
FAX 512.475.4872
www.thc.texas.gov