

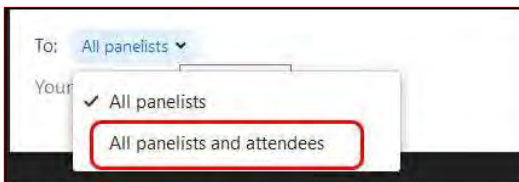


Building Resiliency in Historic Cemeteries

Disaster Planning and Response in Historic Texas Cemeteries

Zoom Webinar Housekeeping

- Trouble with computer audio? Try using your phone instead.
 - 1-346-248-7799 Webinar ID 882 6292 7002
 - All attendees are in listen-only mode
- This session is being recorded for later viewing
- Use the **chat box** to
 - Ask for help
 - Make comments during the presentation
 - Share links or tips
- Use the **Q & A box** to
 - Ask the presenters a question
 - We'll answer them live at the end of the presentation



Webinar Series Introduction and Overview

Online Training Series: Disaster Preparedness & Response for Historic Cemeteries

- **Goal:** Provide cemetery caretakers with the knowledge and skills necessary to build greater resiliency to withstand and recover from future disasters
- **Timeline:** Summer 2021 – Summer 2022
- **Project Team:** Led by Terracon Consultants, Inc.
- **Program:** Six webinars + six stakeholder meetings



Rockport Cemetery, Aransas County

Instructional Webinars

1. Lay of the Land: Cemetery Orientation
2. Cemetery Survey and Data Collection
3. Risk Assessment & Pre-Disaster Planning
4. Immediate Response to Natural Disasters, plus Preservation Funding
5. Post-Disaster Recovery & Restoration
6. People's Choice – Building Resiliency in Historic Texas Cemeteries

Stakeholder Meetings

- Highly interactive
- Group discussions
- Feedback opportunities



McGaffey Cemetery, Jefferson County

Stay Up to Date!

www.thc.texas.gov/Harvey-cemeteries



Building Resiliency in Historic Cemeteries

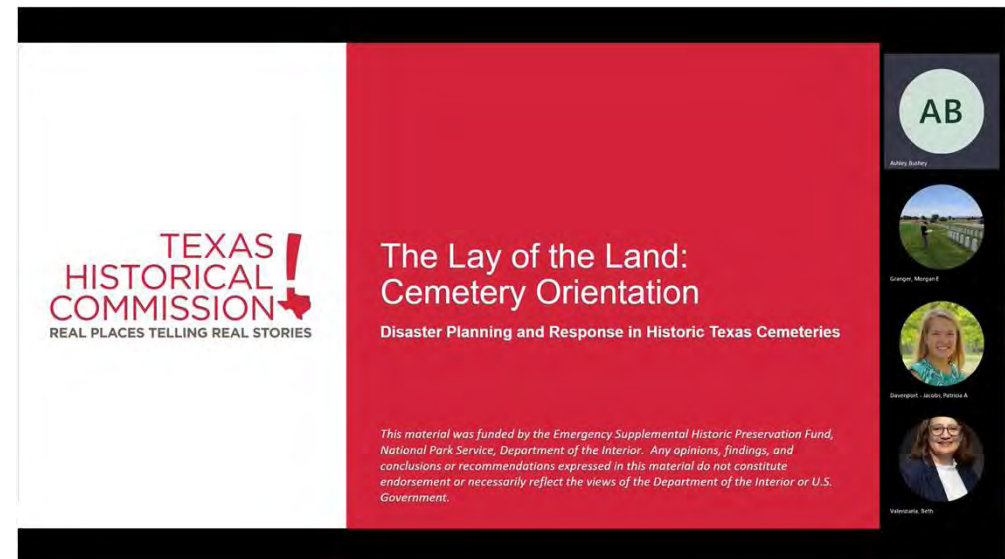
Disaster Planning and Response in Historic Texas Cemeteries

This material was funded by the Emergency Supplemental Historic Preservation Fund, National Park Service, Department of the Interior. Any opinions, findings, and conclusions or recommendations expressed in this material do not constitute endorsement or necessarily reflect the views of the Department of the Interior or U.S. Government.

Webinar 1

Lay of the Land: Cemetery Components, Cultural Practices, and Materials

- Recognize the physical components of cemeteries beyond grave markers
- Recognize common cultural funerary practices and recognize items located at gravesites may reflect cultural traditions that should be determined prior to removal or disturbance of these features
- Understanding of basic cemetery safety practices.



Webinar 2

Survey and Data Collection

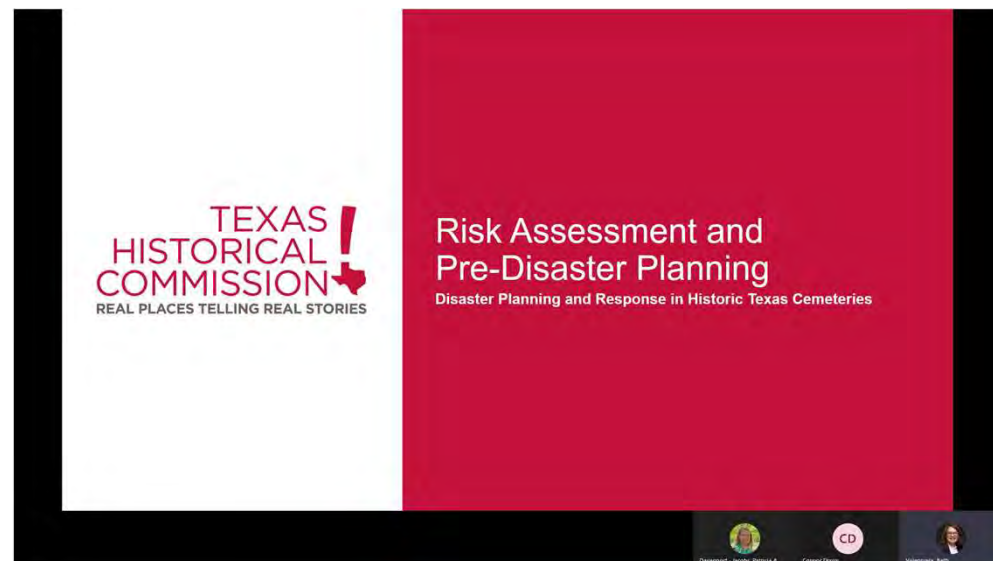
- Historic significance of cemeteries and be able to convey the essential history contained in cemeteries to community stakeholders and potential funding partners.
- Baseline understanding of cemetery documentation methods
- Pre-disaster documentation strategies and data protection methods.

The screenshot shows a webinar slide with a white background on the left and a red background on the right. On the white background is the Texas Historical Commission logo. On the red background, the title 'Survey and Data Collection' is displayed in white, with the subtitle 'Disaster Planning and Response in Historic Texas Cemeteries' below it. A disclaimer at the bottom of the red section reads: 'This material was funded by the Emergency Supplemental Historic Preservation Fund, National Park Service, Department of the Interior. Any opinions, findings, and conclusions or recommendations expressed in this material do not constitute endorsement or necessarily reflect the views of the Department of the Interior or U.S. Government.' On the right side of the slide, there is a vertical stack of four circular icons: a portrait of a woman, a landscape photo, a circle with the letters 'AB', and another portrait of a woman.

Webinar 3

Risk Assessment and Pre-Disaster Planning

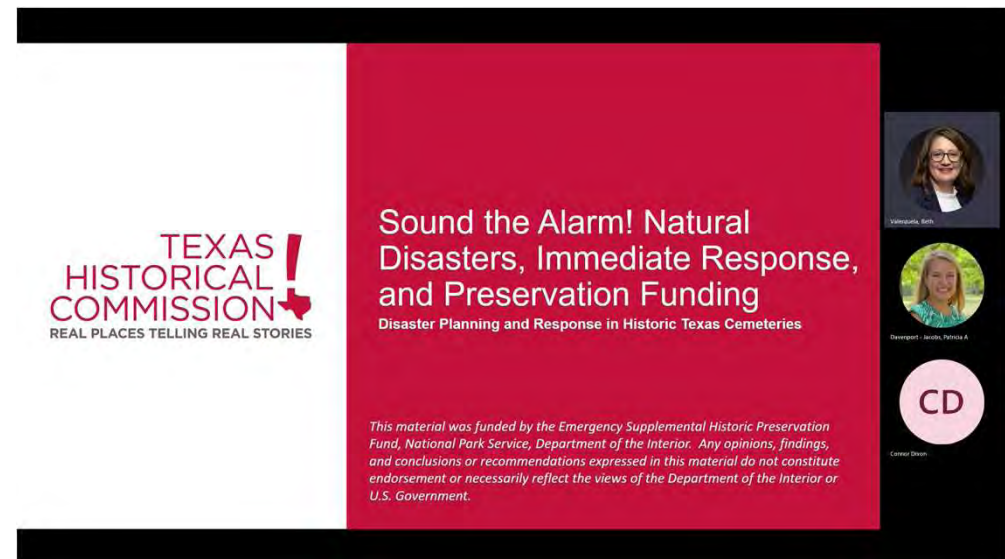
- Potential threats to the cemetery from natural disaster events and identification tools
- Maintenance, landscape, and pre-disaster preparedness plans and mitigation strategies
- Tools for implementing pre-disaster mitigation plans including basic through comprehensive measures



Webinar 4

Sound the Alarm! Natural Disasters, Immediate Response, and Preservation Funding

- Unique safety considerations when working in a post-disaster cemetery environment
- Tools for identifying appropriate post-disaster response actions
- Post-disaster documentation
- Funding support and technical assistance



The slide features the Texas Historical Commission logo on the left. The main title is 'Sound the Alarm! Natural Disasters, Immediate Response, and Preservation Funding' with the subtitle 'Disaster Planning and Response in Historic Texas Cemeteries'. A disclaimer at the bottom states: 'This material was funded by the Emergency Supplemental Historic Preservation Fund, National Park Service, Department of the Interior. Any opinions, findings, and conclusions or recommendations expressed in this material do not constitute endorsement or necessarily reflect the views of the Department of the Interior or U.S. Government.' On the right side, there are three circular icons: a portrait of a woman, a portrait of a woman, and a circle with the letters 'CD'.

Webinar 5

Post Disaster Recovery and Restoration of Historic Cemeteries

- Tools to recognize typical disaster related deterioration mechanisms
- Basic restoration/conservation strategies
- Understanding of when a professional is required for the proposed work
- Safety concerns for restoration type work

The screenshot shows a webinar slide with a white background on the left and a red background on the right. The Texas Historical Commission logo is on the left. The title 'Post-Disaster Recovery and Restoration of Historic Cemeteries' is in white on the red background, with the subtitle 'Disaster Planning and Response in Historic Texas Cemeteries' below it. A disclaimer at the bottom of the red area reads: 'This material was funded by the Emergency Supplemental Historic Preservation Fund, National Park Service, Department of the Interior. Any opinions, findings, and conclusions or recommendations expressed in this material do not constitute endorsement or necessarily reflect the views of the Department of the Interior or U.S. Government.' On the right side, there are three circular icons: a portrait of Vanessa Beth, a portrait of Deborah Jacob, and a pink circle with the letters 'CD'.



Lamar Cemetery – Aransas County

Learning Objective 1

- Participants will understand key components of a resilient cemetery.

Learning Objective 2

- Participants will be able to define measurable and attainable preservation goals for cemeteries.

SMART

Specific

Measurable

Achievable

Realistic

Timely



Old Hallettsville Cemetery, Lavaca County

Learning Objective 3

- Participants will be able to critically evaluate if resilient actions meet preservation goals for their cemetery.

Learning Objective 4

- Participants will understand how safety, community involvement, and funding support a resilient cemetery.



Oakwood Cemetery, Travis County



Pace Cemetery Post Ike— Jefferson County



FEMA

Disasters & Assistance ▾

Resilience

Our Mission

FEMA Resilience aims to build a culture of preparedness through insurance, mitigation, continuity, preparedness programs and grants. The organization includes the [Federal Insurance and Mitigation Administration](#), [Grant Programs Directorate](#), [National Continuity Programs](#), and [National Preparedness Directorate](#), as well as other offices. FEMA Resilience works to fulfill FEMA's vision of *a prepared and resilient nation* through its programs and partnerships.

The Federal Emergency Management Agency defines resiliency as:

- “the capacity of **individuals, communities, businesses, institutions, and governments** to adapt to changing conditions and to prepare for, withstand, and rapidly recover from disruptions to everyday life, such as hazard events.”

What is Resiliency?



Keys to Building Resiliency

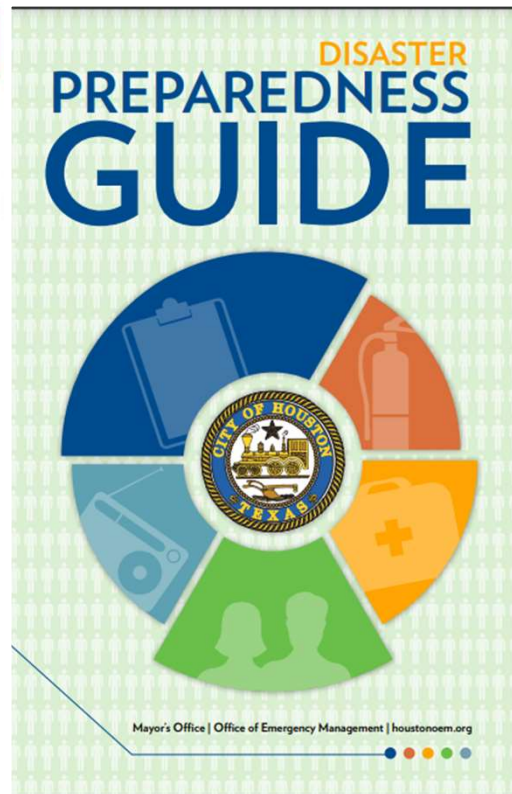
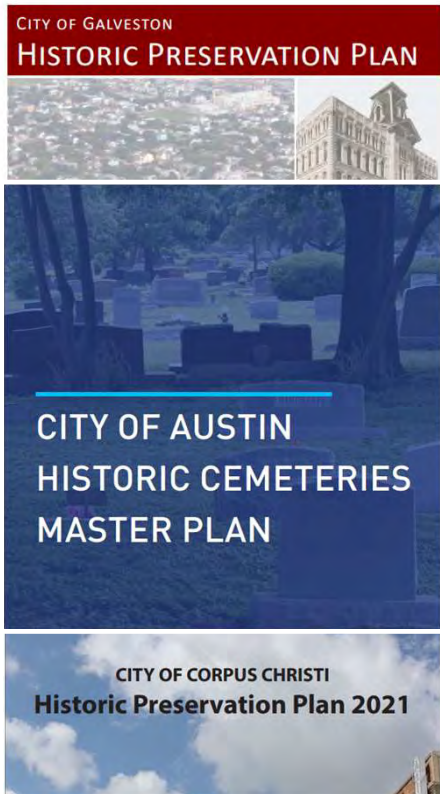
- Planning (short-term and long-term goals)
- Community involvement
- Maintaining a safe environment
- Funding source(s)

What is Resiliency?



Keys to Building Resiliency

- **Planning (short-term and long-term goals)**
- Community involvement
- Maintaining a safe environment
- Funding source(s)



Is your cemetery already included in regional plans?

- Does the City/County (CLGs/CHCs) already include the cemeteries in their comprehensive plan, including a master preservation plan, preservation goals?
- Does the City/County already include cemeteries in their disaster/emergency management plan?



What is Preservation Planning?

- National Park Service defines Preservation Planning as
 - a process that organizes preservation activities (identification, evaluation, registration and treatment of historic properties) in a logical sequence.

Guidelines for the Treatment of Cultural Landscapes

Preservation Planning and the Treatment of Cultural Landscapes



Careful planning prior to treatment can help prevent irrevocable damage to a cultural landscape. Professional techniques for identifying, documenting, and treating cultural landscapes have advanced over the past twenty-five years and are continually being refined.

As described in the National Park Service publication, [Preservation Brief #36: Protecting Cultural Landscapes](#), the preservation planning process for cultural landscapes should involve: historical

What is Preservation Planning?

- Preservation Planning follows basic principles:
 - Important historic properties cannot be replaced if they are destroyed.
 - Planning should be the first step in preservation.
 - Preservation planning includes public participation.



Lamar Cemetery – Aransas County

Preservation Plan Components

- History of the cemetery (Webinar 1)
- Identification of resources (Webinar 2)
- **Preservation goals**
- **Maintenance schedule and records**
 - Conservation records (Webinar 5)
- Contact list (Webinars 3, 4, 5)

Cemetery Preservation Goals:

1. Maintain an effective cemetery association by holding annual officer elections.
2. Document significance of cemetery by preparing a Historic Texas Cemetery application by 2024.
3. Create a successful volunteer program by hosting training opportunities every six months. Training attendance will be a requirement of volunteer application approval.

Preservation Goals

- Framework for management and conservation of resources within the cemetery
- Outlines prioritized treatment options
- Sets phased approach to implementation
- Defines measure of successful preservation outcomes

SMART

Specific

Measurable

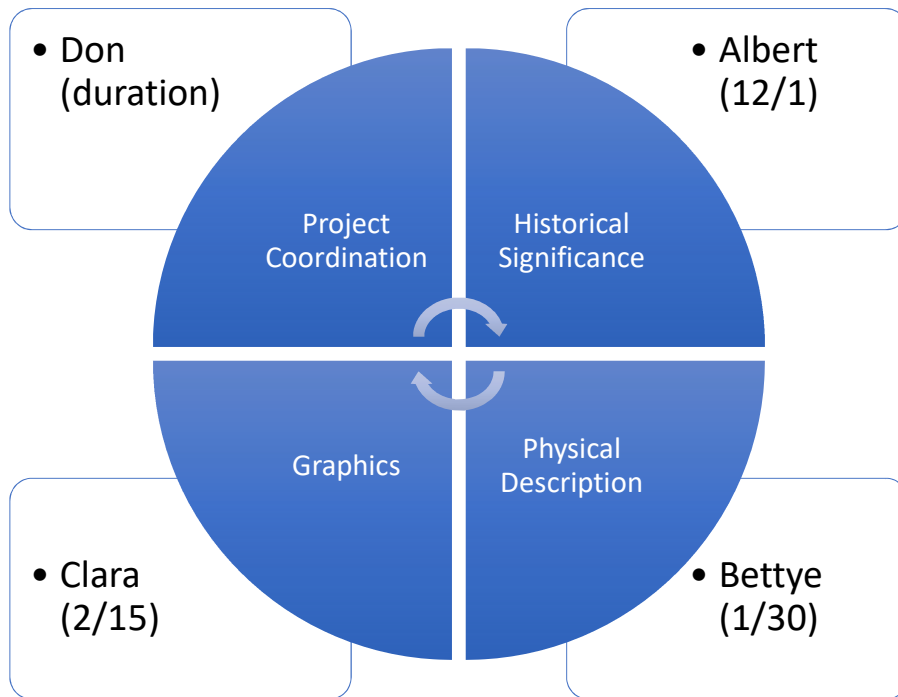
Achievable

Realistic

Timely

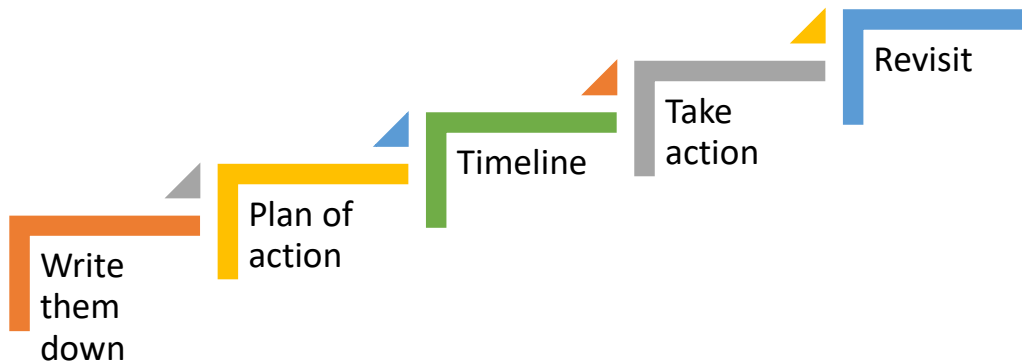
Preservation Goals

- Create SMART goals
 - Complete a HTC application for the Cemetery within the next 2 years.
 - Undertake conservation work on 25% of repair projects identified in the condition assessment by 2024.



Preservation Goals

- Create a roadmap to meet each goal with tasks and assignments/task champions.
- HTC application
 - Complete historical research by December 1, 2022 (Albert)
 - Complete physical description by January 30, 2023 (Bettye)
 - Complete graphics by February 15, 2023 (Clara)
 - Coordinate with THC for the duration of the application process (Don)



Preservation Goals

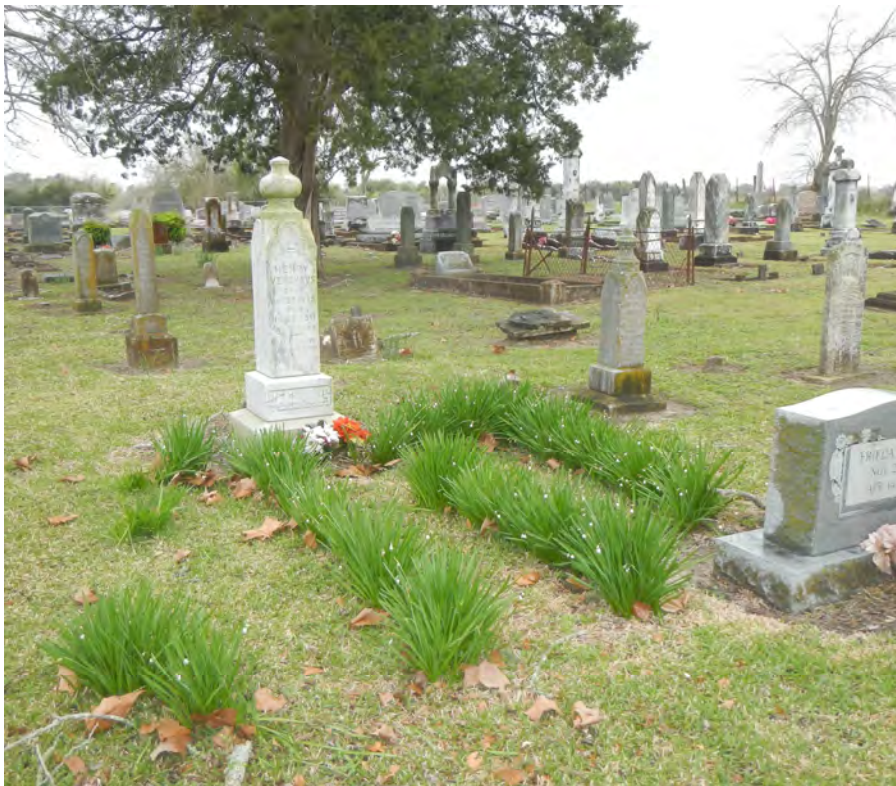
- Write them down
- Define a plan of action
- Create a timeline
- Take action
- Revisit, re-evaluate, and/or add new goals
- Store plan in a secure location



McGaffey Cemetery – Jefferson County

Maintenance Schedules

- Major protective efforts will likely not occur for cemetery resources in the event of an upcoming disaster
- Regular maintenance helps to minimize impacts from natural disasters



Trinity Lutheran Church Cemetery – Colorado County

Maintenance Schedules

- Vegetation



Lamar Cemetery – Aransas County

Maintenance Schedules

- Monument conditions



Fulton Cemetery – Aransas County

Maintenance Schedules

- Sitework



Sustainable Actions

- People – Planet – Profit
- Cemeteries that incorporate sustainable practices are easier to maintain and less susceptible to major damage from weather events



Burditt Prairie Cemetery – Montopolis, Travis County

Sustainable Actions

- Environmental
 - Foster habitat
 - Reduce toxics use
 - Conserve resources
- Social
 - Maximize community value
- Fiscal
 - Minimize cost



Old Hallettsville Jewish Cemetery – Hallettsville, Lavaca County

Making the Difficult Decisions

- Questions to Ask:
 - What are the likely risks and threats to the cemetery?
 - How often does the threat occur?
 - What is the likely damage that will occur?
 - What resources will be impacted?



Broadway Cemetery, Jewish section – Galveston County

Making the Difficult Decisions

- Assess the potential risks and address those resources most susceptible to damage
- Set priorities for protective actions
 - Irreplaceable markers (vernacular, rare monument types, vulnerable materials)
 - Small investment (time, money, materials) but large impact projects

What is Resiliency?



Keys to Building Resiliency

- Planning (short-term and long-term goals)
- **Community involvement**
- Maintaining a safe environment
- Funding source(s)



Mt. View Cemetery – Coleman County

Cemetery Boards and Governing Authorities

- Well-functioning boards help prioritize and organize resilient actions
- Necessary to manage volunteer activities
- Can keep focus on the big picture of cemetery planning efforts



Olivewood Cemetery – Houston, Harris County

Maintain connection to volunteers

- Volunteers are necessary to keep cemetery open and maintained
- Volunteers can help spread the history and story of significance within the community
- Engage with officials (civil servants) in city and county (local/regional level) and elected officials
- Maintain relationships with businesses, schools, service organizations



Eastern Cemetery – Louisville, Kentucky

The Good Samaritan

" Wild men on mowers do more damage than you can repair."

- Make sure volunteers know authorization is required to complete work within the cemetery
 - Signage
 - Formal volunteer application
 - Formal volunteer training process

What is Resiliency?



Keys to Building Resiliency

- Planning (short-term and long-term goals)
- Community involvement
- **Maintaining a safe environment**
- Funding source(s)



Burditt Prairie Cemetery – Montopolis, Travis County

Cemetery-specific safety considerations

- Is the cemetery itself safe?
- Are conditions safe for work and for visitors?
- Are resources kept safe?

What is Resiliency?



Keys to Building Resiliency

- Planning (short-term and long-term goals)
- Community involvement
- Maintaining a safe environment
- **Funding source(s)**



Horticulture Tour, Arlington National Cemetery – Washington, DC

Fundraising activities

- Grants
- “Friends of the Cemetery” non-profit association
- In-kind services/donations from community businesses
- Community fundraisers/raffles
- Letter-writing requests
- Events



Fiscal Management of Cemetery Organization

- Responsible and organized treasurer/book-keeper
 - Understands reporting requirements for non-profit orgs
- Use standard accounting practices
- Document volunteer hours to use as grant fund matching as in-kind donations



Lamar Cemetery – Aransas County

Key components of a resilient cemetery

- Preservation Planning
- Community Involvement
- Safety
- Funding sources

- Define measurable and attainable preservation goals for cemeteries

SMART

Specific

Measurable

Achievable

Realistic

Timely



Old Hallettsville Cemetery, Lavaca County

- Critically evaluate if resilient actions meet preservation goals for their cemetery

- Understand how safety, community involvement, and funding support a resilient cemetery



Oakwood Cemetery, Travis County

- Handouts
 - Webinar 6 Slides
- Resources
 - Preservation/Restoration/Rehabilitation Standards
 - Preservation Planning
 - Sustainability Resources
 - Community Involvement
 - Safety
 - Funding



Webinar Series Information

Stay Up to Date!

www.thc.texas.gov/Harvey-cemeteries



Questions?

a Terracon Pinyon production